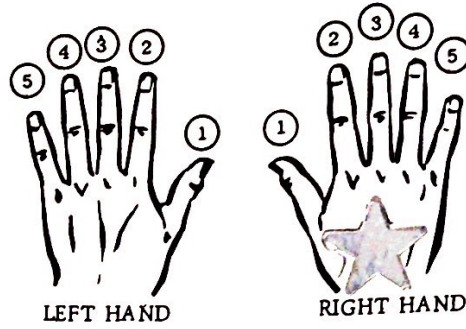


16. The fingers are numbered for playing the piano.

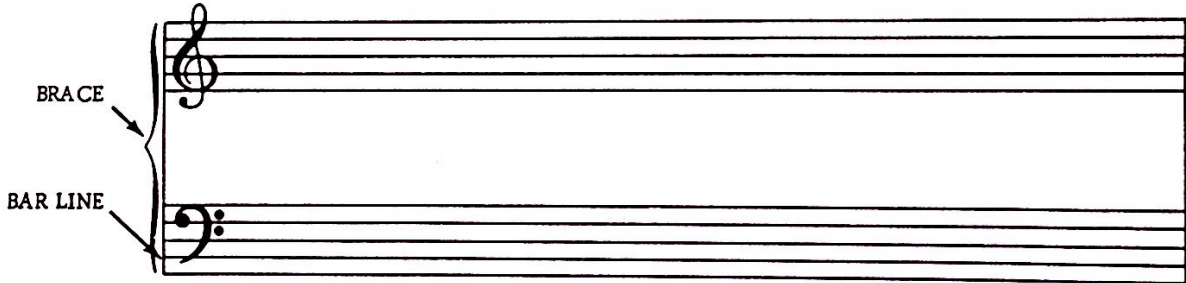


The thumb is number \_\_\_\_\_.

The little finger is number \_\_\_\_\_.

17. The fingers are numbered one, \_\_\_\_\_, \_\_\_\_\_, four, and \_\_\_\_\_.

18. This is a Grand Staff.



The \_\_\_\_\_ Clef and the \_\_\_\_\_ Clef joined together by a Brace and Bar Line form the GRAND STAFF.

19. Bar lines divide the staff into measures.

