
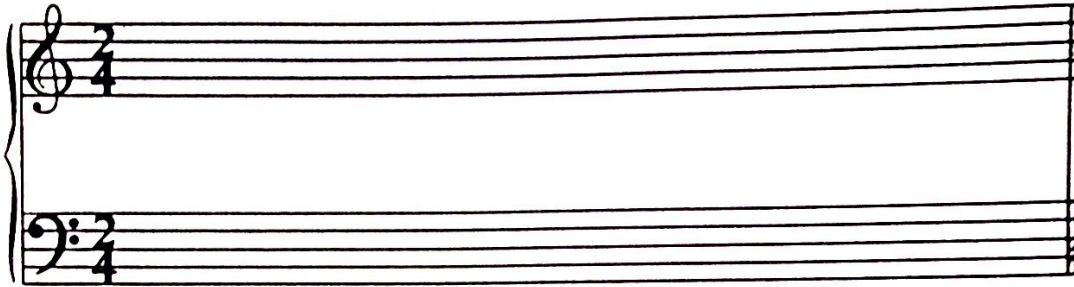


40. This  is a half note. The note head is not blacked in.

Draw five half notes.

41. At the beginning of a piece after the clef signs two numbers are written. They are called the TIME SIGNATURE. (It is also called the METER SIGNATURE.)



The top number of the above time signature is \_\_\_\_\_.

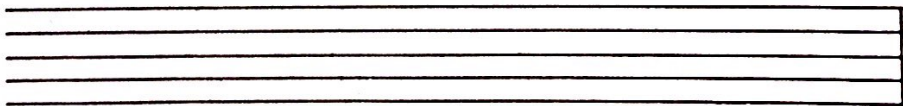
The bottom number of the above time signature is \_\_\_\_\_.


42. The Time or Meter Signature means:

2- Two beats to each measure.

4- A quarter note receives one beat.

Write five  $\frac{2}{4}$  meter signatures on this staff.



43. In  $\frac{2}{4}$  meter the quarter note () receives one beat and the half note receives two beats.

Under these notes write how many beats each receives.



44. When a quarter note receives one beat, a half note receives \_\_\_\_\_ beats.

In  $\frac{2}{4}$  meter a quarter note receives \_\_\_\_\_ beat.